



# TEL Clean Track ACT8 System

(RNX20200226-02)

2020.02.26



# TEL Clean Track ACT8 System

## Wafer Specification

<b>Wafer Size</b>	<b>200mm</b>	<b>Description</b>	<b>Coater - Developer</b>
<b>Model</b>	<b>ACT8</b>	<b>Vintage</b>	<b>2002</b>

## System Configuration

- In-Line**      **4COAT 4DEV**
- CSB**       **PRB1**       **PRB2**       **IFB**
- Power Box**       **T&H Controller #1**       **Chemical Box #1**       **Chemical Box #2**
- MFC #1**       **Thermo Controller #1**       **Thermo Controller #2**       **Fire System Box #1**

**UNC : Uni-Cassette Stage**

**COT : Coat Process Station**

**DEV : Develop Process Station**

**HHP : High Temperature Station**

**SHU : Shuttle**

**TCP : Transition Chill Plate**

**ADH : Adhesion Process Station**

**TRS : Transition Stage**

**WEE : Wafer Edge Exposure Process Station**

**LHP : Low Temperature Station**

**CPL : Cool Plate**

**PHP : Precision Hot Plate Process Station**

# TEL Clean Track ACT8 System

## System Configuration

4-4 WEE		3-24 LHP		3-14 LHP	2-24 HHP		2-14 HHP	1-0 CRA	1-4 UNC
		3-23 PHP		3-13 LHP	2-23 LHP		2-13 HHP		
4-5 EIS	4-0 IRA	3-22 PHP		3-12 LHP	2-22 CPL		2-12 CPL		1-3 UNC
		3-21 PHP		3-11 CPL	2-21 CPL		2-11 CPL		
		3-20		3-10	2-20		2-10 CWH		
		3-19 PHP	3-29 LHP	3-9 CPL	2-19 CPL	2-29 LHP	2-09 CPL		
		3-18	3-28 LHP	2-18 SHU		2-28 LHP	2-08 TRS		
		3-17 CPL	3-27 LHP	2-17 SHU		2-27 LHP	2-07 TCP		
		3-16 TRS	3-26 LHP	3-6	2-16	2-26 LHP	2-6		
		3-15 TRS	3-25 LHP	3-5 CPL	2-15 ADH	2-25 LHP	2-5 ADH		
		3-0 PRA				2-0 PRA			
		3-3 DEV		3-4 DEV		2-3 COT		2-4 COT	
4-3 BUFFER		3-1 DEV	3-2 DEV	2-1 COT	2-2 COT		1-1 UNC		
4-2 BUFFER									
4-1 T. HOLD								1-5 Pick-Up	

# TEL Clean Track ACT8 System

## System Configuration

### External Tool

- 1). **Chemical Cabinet #1 (Solvent, Developer)**
- 2). **Chemical Cabinet #2 (HMDS, PR)**
- 3). **T & H Controller #1 (YEST)**
- 4). **Thermo Controller Unit #1 (SMC)**
- 5). **Thermo Controller Unit #2 (SMC)**
- 6). **AC Power Box**
- 7). **MFC**
- 8). **Fire Extinguisher**
- 9). **Existed Machine Status : Disconnected, Facility Removed**
- 10). **Power System Status : Disconnected**
- 11). **Gas System Status : Disconnected**
- 12). **C.S.S System Status : Disconnected**

# TEL Clean Track ACT8 System

## Detail Configuration

### Description

- 1). Right to Left
- 2). Model : Clean Track ACT-8
- 3). WAFER & CARRIER TYPE : 8", Notch Type, 25 Slots
- 4). System Power Rating : AC 208V, 3-Phase for System
- 5). Loading Configuration : 4 Loader Uni-cassete
- 6). Software Version : Power off
- 7). Main Controller : Missing

### Main System

- 1). Main Frame with System Controller
- 2). Carrier Station
  - Type : Normal Uni-Cassette Type
  - 4 Cassette Stage, 1 Pick-up Cassette
  - Uni-Cassette System

# TEL Clean Track ACT8 System

## System Configuration

### Main System

#### 3). Coater Unit

- 4 Dispense Nozzle with Temperature Controlled Lines for Each Unit.
- RDS Pump
- Rinse Nozzle : Back / EBR / Solvent Bath for Etch Unit
- Rinse System : 3 Liter 2 Tank Buffer Tank System
- P. R Suck-Back Valve Type : AMC Suck-Back Valve
- Programmable Side Rinse
- Drain : Direct Drain

#### 4). Tarc Coater Unit

- . 3 Dispense Nozzle with Temperature Controlled Lines for Etch Unit
- . RDS Pump
- . Rinse Nozzle : Back / EBR / Solvent Bath for etch unit
- . P.R Suck-Back Valve Type : AMC Suck-Back Valve
- . Programmable Side Rinse

# **TEL Clean Track ACT8 System**

## **System Configuration**

### **Main System**

#### **4). Tarc Coater Unit**

- . Drain : Direct Drain**

#### **5). Developer Unit**

- . H Nozzle for Each Unit**
- . 2 Stream Nozzle for DI Rinse and 2 Points for Back Side Rinse on Each Unit**
- . Developer System : 3 Liter 2 Tank Buffer Tank System**
- . Developer Temperature Control System**
- . Drain : Direct Drain**

#### **6). Interface Type : ASML**

#### **7). Adhesion Unit 2EA**

- . 100% Sealing Closed Chamber (Built-in Hot Plate)**
- . HMDS Tank with Float Sensor In System**

#### **8). Low Temp Hot Plates (LHP) 15EA**

# TEL Clean Track ACT8 System

## System Configuration

### Main System

- 9). High Temp Hot Plates (HHP) 3EA
- 10). Chill Plates (CPL) 10EA
- 11). Precision Chilling Hot Plate Process Station (PHP) 4EA
- 12). TCP Module 1EA
- 13). TRS Module 3EA
- 14). WEE (Wafer Edge Exposure) Module 1EA
  - . Wafer Type : Notch, DUV Type
- 15). Chemical Cabinet #1 : Solvent & Developer
- 16). Chemical Cabinet #2 : PR & HMDS
- 17). Temperature & Humidity Controller 1EA
  - . Type : YEST (YIB-TP23)
- 18). TEMP Control Unit (TCU) 2EA
  - . Type : TEL OEM



# TEL Clean Track ACT8 System

## System Configuration

### Main System

19). AC Power Box

20). MFC : 4 Port

21). Fire Extinguisher

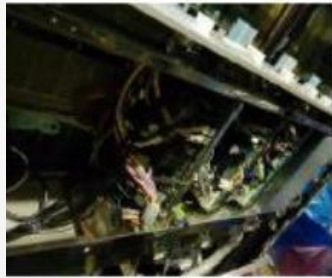
### Missing Parts :

-. Main Controller

# TEL Clean Track ACT8 System



**Machine no.**



**CSB Board Area**



**Coater Module (2-1)**



**Coater Module (2-2)**



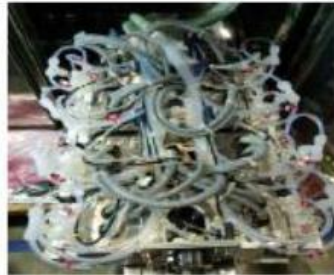
**Coater Module (2-3)**



**Coater Module (2-4)**



**RDS Pump**



**PR Pump Area**



**COT Chemical Area(L)**



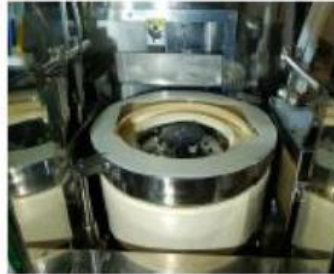
**COT Chemical Area(R)**



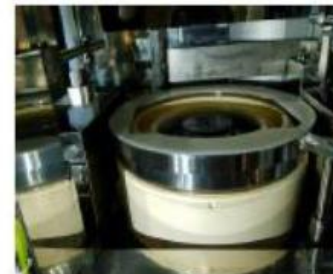
**AMC Valve**



**DEV Module (3-1)**



**DEV Module (3-2)**



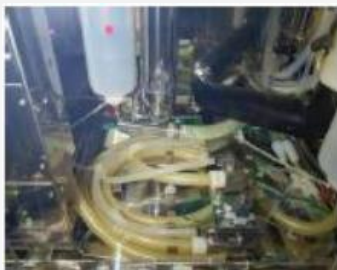
**DEV Module (3-3)**



**DEV Module (3-4)**



# TEL Clean Track ACT8 System



DEV Chemical Area



CRA



MFC



IRA



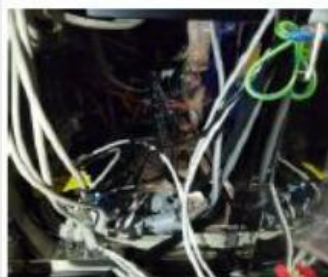
WEE



CSB & PRB1



Developer



Main Con. Area



Chemical Cabinet



PRB2



Fire Extinguisher



T&H Controller



AC Power

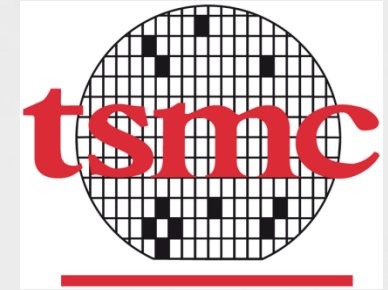


Thermo Controller



EBR Flowmeter

# RenoNix Major Customer



# Contact

We're Capable of Most of service for PVD,CVD, ETCH areas.  
If you have any inquiry or interest , please feel free to contact us.



## RenoNix Co., Ltd

272, Naehyangan-gil, Jeongnam-myeon,  
Hwaseong-city, Gyeonggi-do, Korea (445-962)

Tel : +82 31 354 9494

Fax : +82 31 354 9323

Email : [renonix@irenonix.com](mailto:renonix@irenonix.com)

Website : [www.irenonix.com](http://www.irenonix.com)

## RenoNix China (Wuxi) Office

53-602 Meiman Garden, New District,  
Wuxi, Jiangsu Province, China

HP : +86 137 7115 2844

Email : [Alvin.ryoo@irenonix.com](mailto:Alvin.ryoo@irenonix.com)

[renonix@163.com](mailto:renonix@163.com)

Website : [www.irenonix.com](http://www.irenonix.com)