



# TEL Clean Track ACT8 (RN20190903-01)

2019.09.03



## TELACT8

Wafer Size	200mm
Vintage	1999
Machine Type	R-Type, I-Line
Machine Block	2 Block
M/C	M/C Normal Installation
	HDD (Master/Slave) Normal Installation
	Software (Data) Back up
	Main Controller Version (#3 Version)



# TELECT8



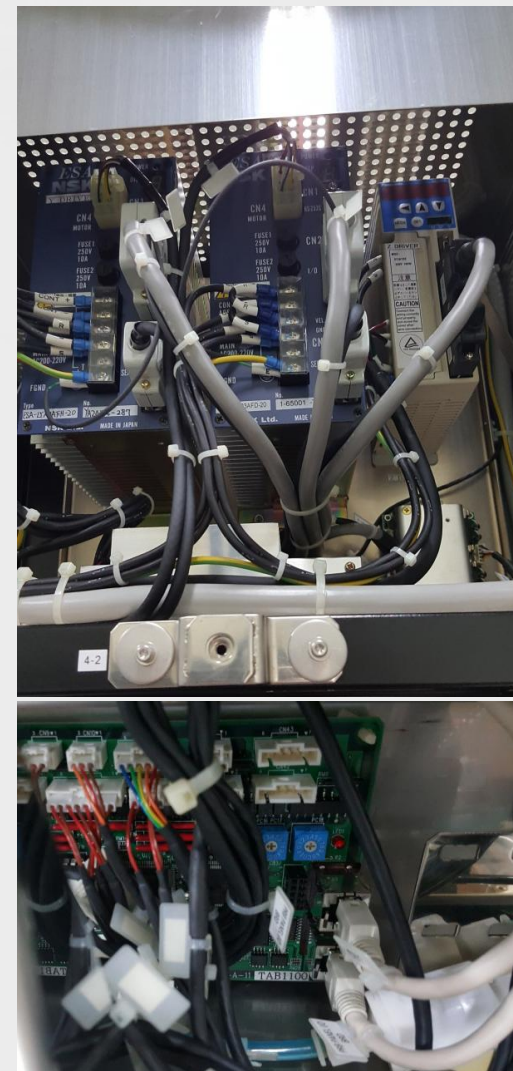
## TELACT8

System Configuration	Normal (Loader 4ea)	
	COT (Coat Process Station), 3 Nozzle, 2 Unit, RPC Pump - Solvent Automatic Supply : 3L 2 Buffer Tank - Side Rinse (EBR) : 1EA - Back Side Rinse (BSR) : 2EA	
	DEV (Develop Process Station), 1 Nozzle, 3 Unit, H Nozzle Type - Dev Solution Automatic Supply : 3L 2 Buffer Tank - Rinse Nozzle : 2 EA - Back Side Rinse : 2 EA	
	ADH (Adhesion Process Station) 2EA LHP (Low Temperature Hot Plate Station) 12EA HHP (High Temperature Hot Plate Process Station) 2EA CPL (Chilling Plate Process Station) 8EA TRS (Transition Stage Unit) 4EA CHP (Chilling Hot Plate Process Station) 4EA CWH (Cup Washer Holder Unit) 2EA SHU (Shuttle Module) 2EA	
	IFB : Good Condition	EIS : ASML Type
	WEE : Good Condition	AC Power Box : Good Condition

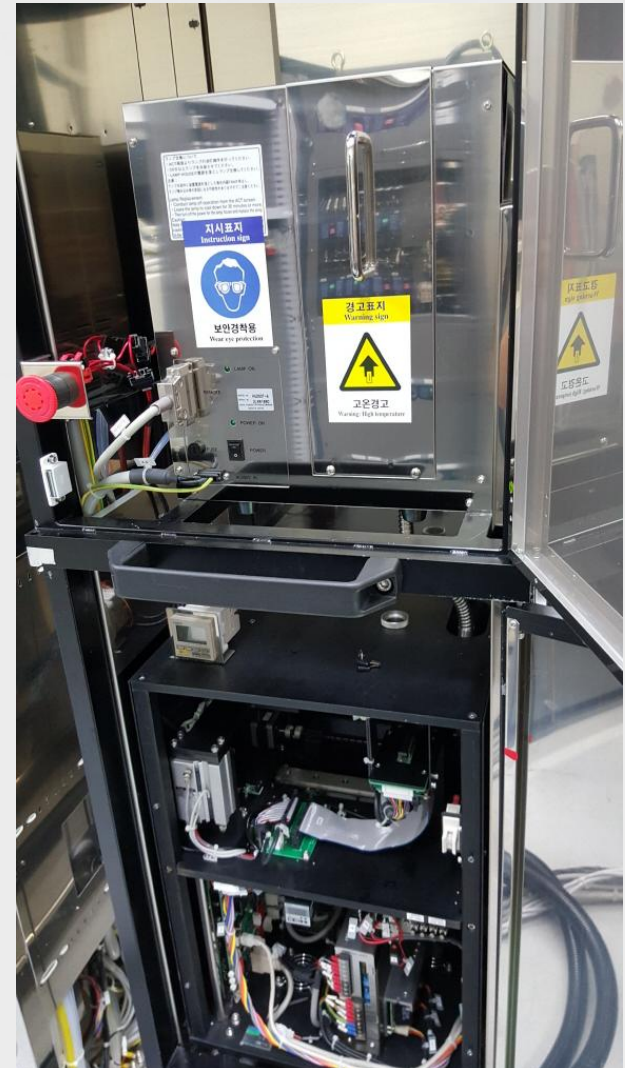
# TELECT8

System Configuration		UPS (None)				Chemical Box : Good Condition					
		Temp Controller : Good Condition				T & H (Komatsu 1821) : Good Condition					
		MFC : Good Condition				No Missing Parts					
4-4 WEE		3-24 LHP	3-29 RSV	3-14 LHP	2-24 HHP	RSV	2-14 HHP	1-0 CRA	1-1 UNC		
		3-23 CHP	3-28 LHP	3-13 LHP	2-23 LHP		2-13 LHP				
		3-22 CHP	3-27 LHP	3-12 LHP	2-22 LHP		2-12 LHP				
		3-21 CHP	3-26 LHP	3-11 CPL	2-21 CPL		2-11 CPL				
4-5 EIS	4-0 IRA	3-20 RSV	3-25 LHP	3-10 RSV	2-20 CWH	2-0 PRA	2-10 CWH	1-0 CRA	1-2 UNC		
		3-19 CHP	3-0 PRA	3-9 CPL	2-19 CPL		2-9 CPL				
		3-18 RSV		2-18 SHU			2-8 TRS				
		3-17 CPL		2-17 SHU			2-7 TRS				
4-3 BUFFER		3-16 TRS		3-0 PRA	3-6 RSV	2-16 RSV	2-0 PRA	2-6 RSV	1-3 UNC		
		3-15 TRS	3-5 CPL		2-15 ADH	2-5 ADH					
4-2 BUFFER		3-3 DEV		3-4 DEV		RSV		RSV			
4-1 T. HOLD		3-1 DEV		RSV		2-1 COT		2-2 COT		1-5 PUP	

# TELECT8



# TELECT8

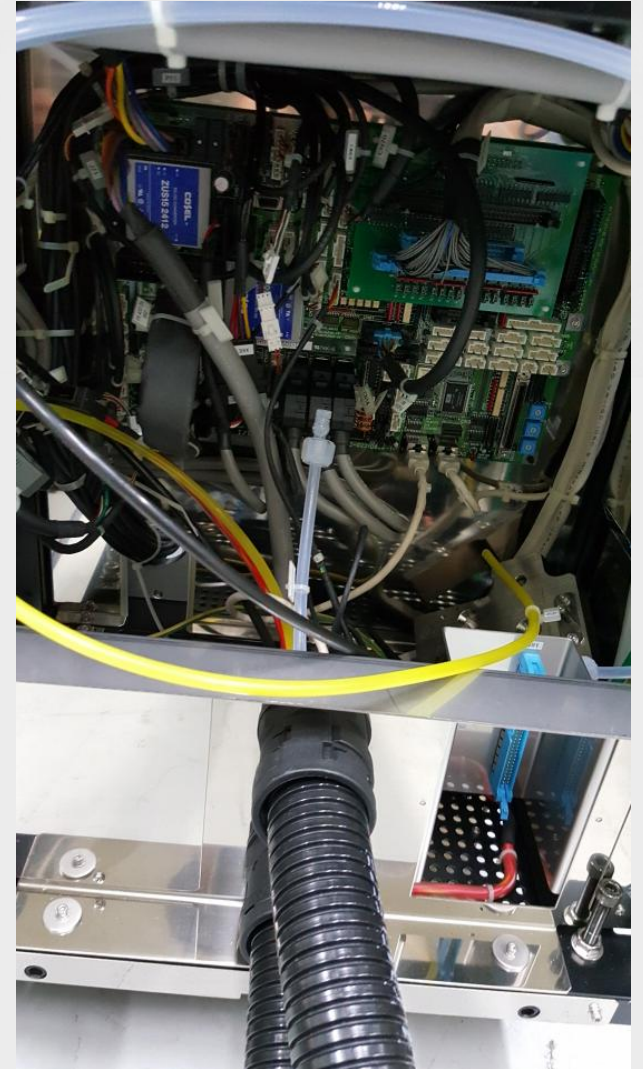


# TELECT8





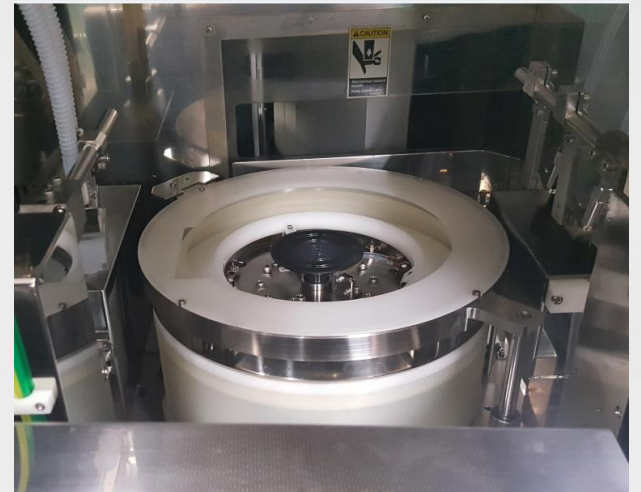
# TELECT8



# TELECT8



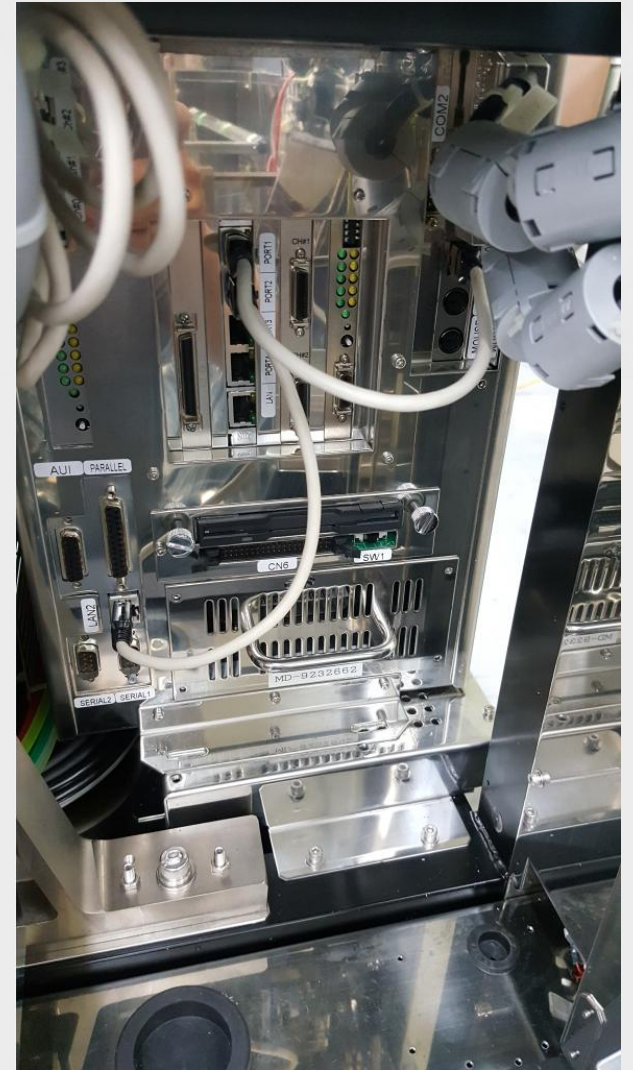
# TELECT8



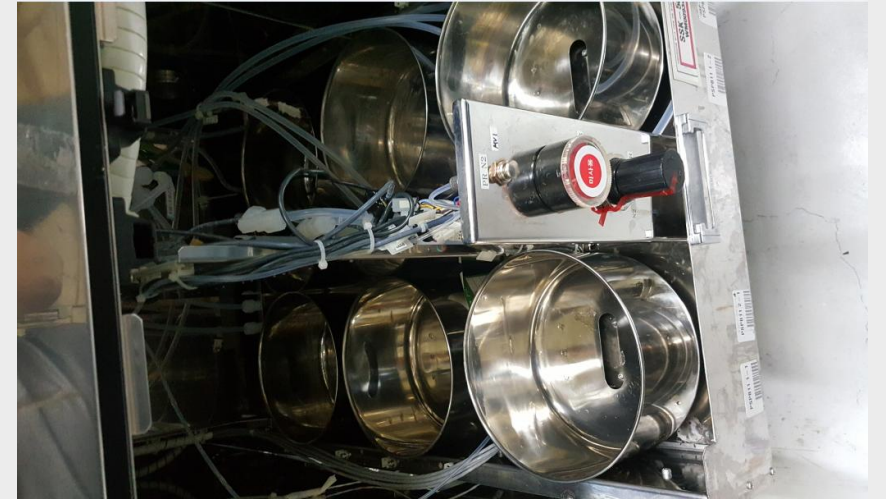
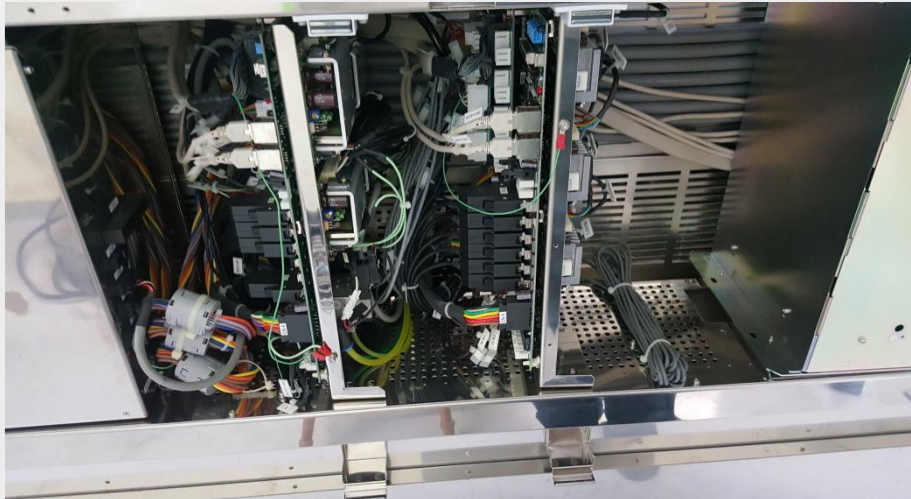
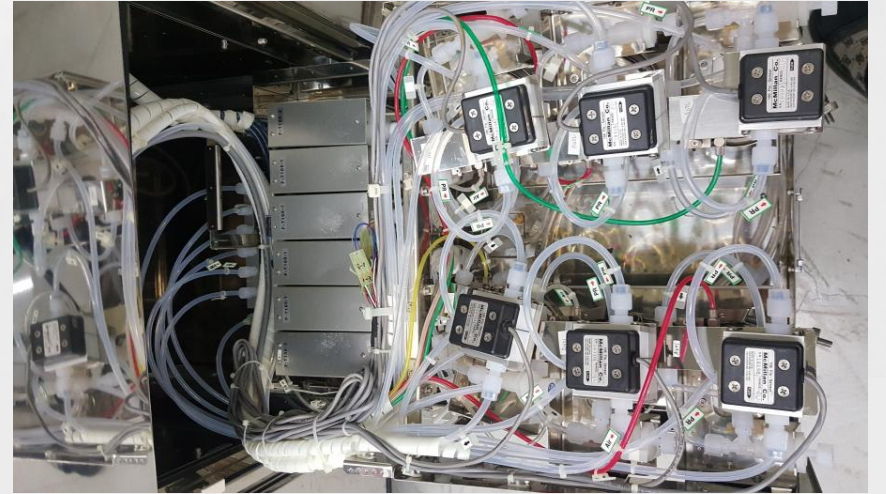
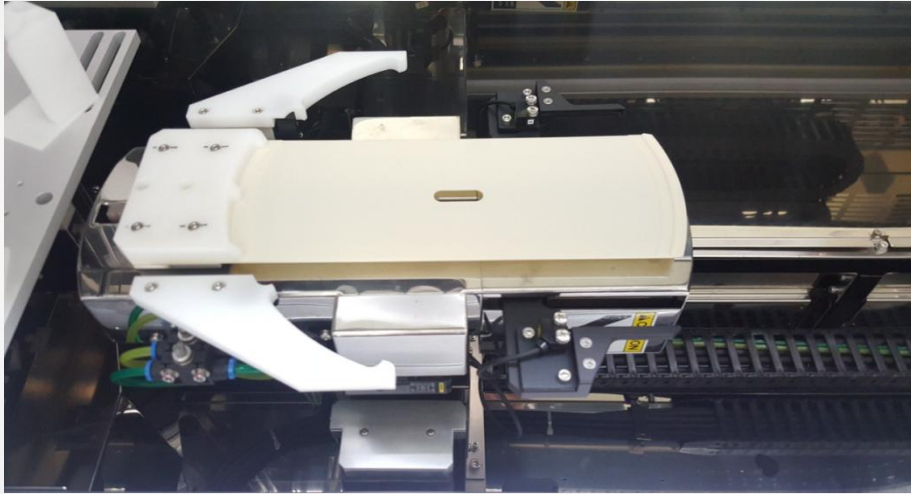
# TELECT8



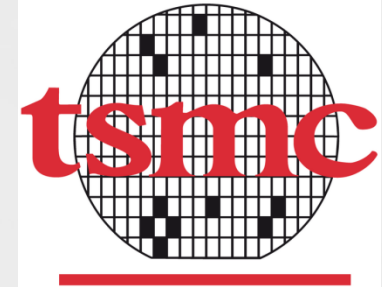
# TELECT8



# TELECT8



# RenoNix Major Customer



# Contact

We're Capable of Most of service for PVD,CVD, ETCH areas.  
If you have any inquiry or interest , please feel free to contact us.



## **RenoNix Co., Ltd**

272, Naehyangan-gil, Jeongnam-myeon,  
Hwaseong-city, Gyeonggi-do, Korea (445-962)

Tel : +82 31 354 9494

Fax : +82 31 354 9323

Email : [renonix@irenonix.com](mailto:renonix@irenonix.com)

Website : [www.irenonix.com](http://www.irenonix.com)

## **RenoNix China (Wuxi) Office**

53-602 Meiman Garden, New District,  
Wuxi, Jiangsu Province, China

HP : +86 137 7115 2844

Email : [Alvin.ryoo@irenonix.com](mailto:Alvin.ryoo@irenonix.com)

[renonix@163.com](mailto:renonix@163.com)

Website : [www.irenonix.com](http://www.irenonix.com)